

Photometric



iFLEXTUBE CLEAR TV RGBW PX8

iFLEXTUBE CLEAR TV RGBW PX8 is a cost effective direct view flexible linear LED lighting fixture designed for dynamic lighting effects. iFLEXTUBE CLEAR TV RGBW PX8 is ideal for exterior accent and contour lighting applications, as well as low-resolution graphics with a resolution of up to 8 pixels per meter. It features an IP67 rating, output brightness and a minimum bend radius of 150mm. Available in spools of 2 meter, it is impact-, UV- and saltwater resistant. The optional 5 meter length is the maximum length for a single spool.

PRODUCT FEATURES

 Beam Angle 120°C	 Flame Resistant	 IP Protection	 Saltwater Resistant	 Solvent Resistant	 IK06 Protection	 UV Resistant	 Standard 2 Meter
 Waterproof IP67	 Warranty 3 year	 Operating Temperature -30° to 45°C	 Color Bin SDCM1	 Lifetime up to 50,000 hours	 Lighting design IES	 Cuttible	 Optional 5 Meter

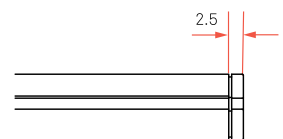
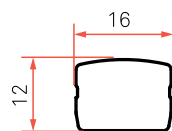
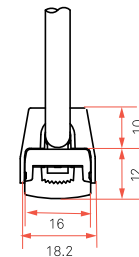
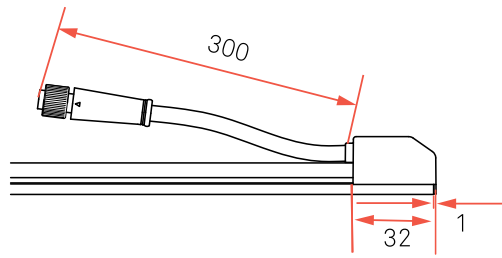
SPECIFICATION

Pixels	8PXL per meter/ 16 PXL per 2 meter
LED	High intensity SMT RGBW 3-in-1 LEDs, 72pcs/meter
Light Effect	Clear
Beam Angle	120°
CRI	>80(W)
Max Length	Standard 2 meter per spool, Optional 5 meter
Power Consumption	13.5W/m
Lumen Output	586lm/m

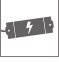



All rights reserved. iFLEXTUBE is a registered trademark of LuxBalance Lighting Limited in various countries. Due to continuous improvement and innovation, specifications may change without notice.

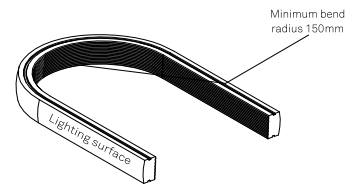
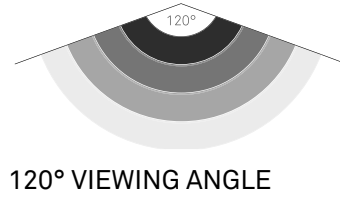
Lumen Maintenance	L70 @ 50,000 hours (25° C)
Housing	Silicone
Mounting	Aluminium mounting channel (optional)
Storage Temperature	-40° C to 75° C
Operating Temperature	-30° C to 45° C
Operating Voltage	24 VDC
Protocol compatibility	In-built DMX512 IC on FPCB
IP Rating	IP67
IK Rating	IK06
Fixture Connectors	0.3m feed cable with male and female connector
Warranty	3 years standard, 5 years optional (additional charge)
Weight	2.0 kg per 10 meter spool
Dimensions	(W) 16 mm x (H) 12 mm x (L) 10,000 mm
Certifications	Comply with CE, RoHS

DIMENSIONS

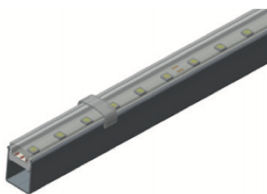


AVAILABLE

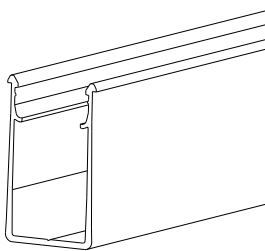
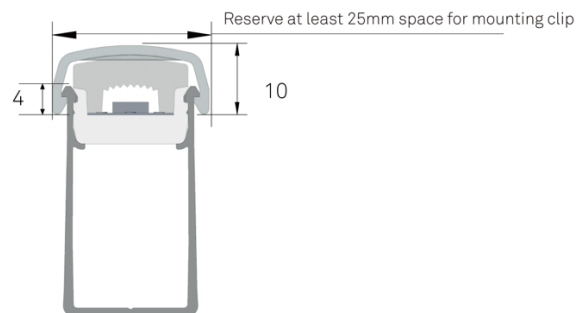
-  Power supplies
-  Cables
-  Connectors
-  Profile



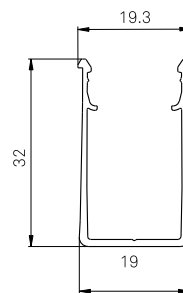
INSTALLATION ACCESSORIES



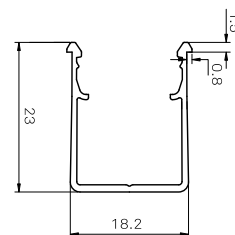
Transparent PC clip
Model name: LFT1612-P05



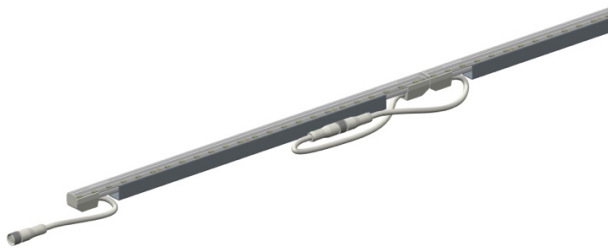
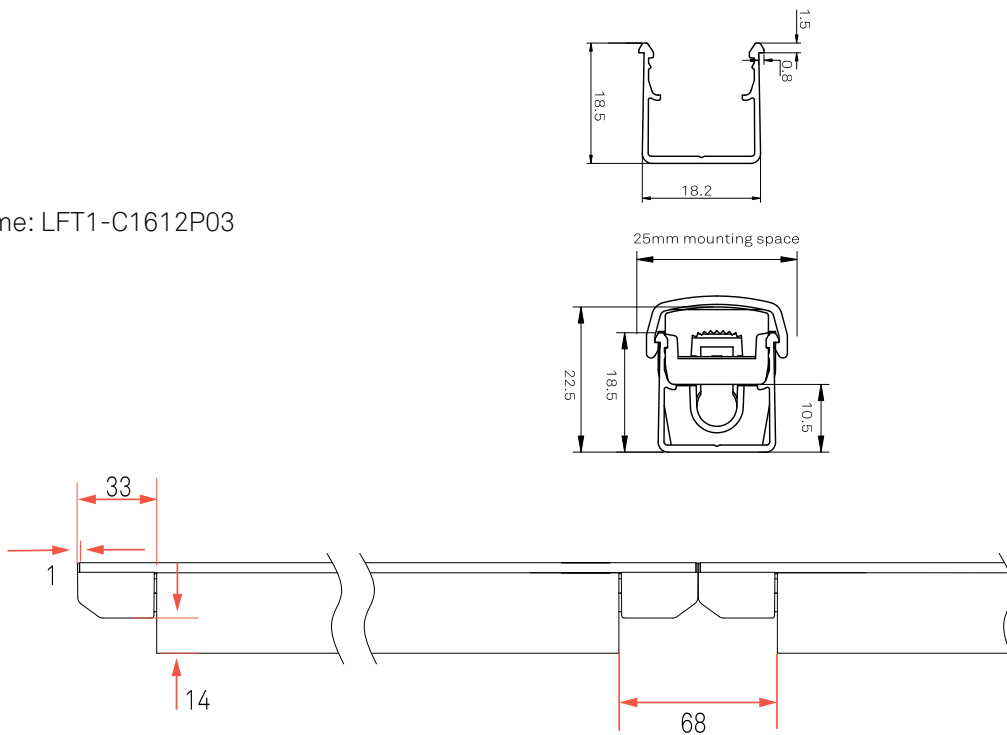
Aluminium profile
Model name: LFT1-C1612P01



Model name: LFT1-C1612P02



Model name: LFT1-C1612P03



Light strip and aluminium profile assembly dimension drawing

